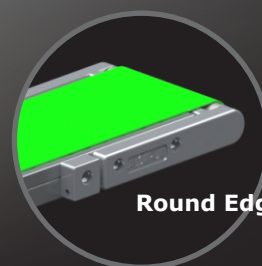
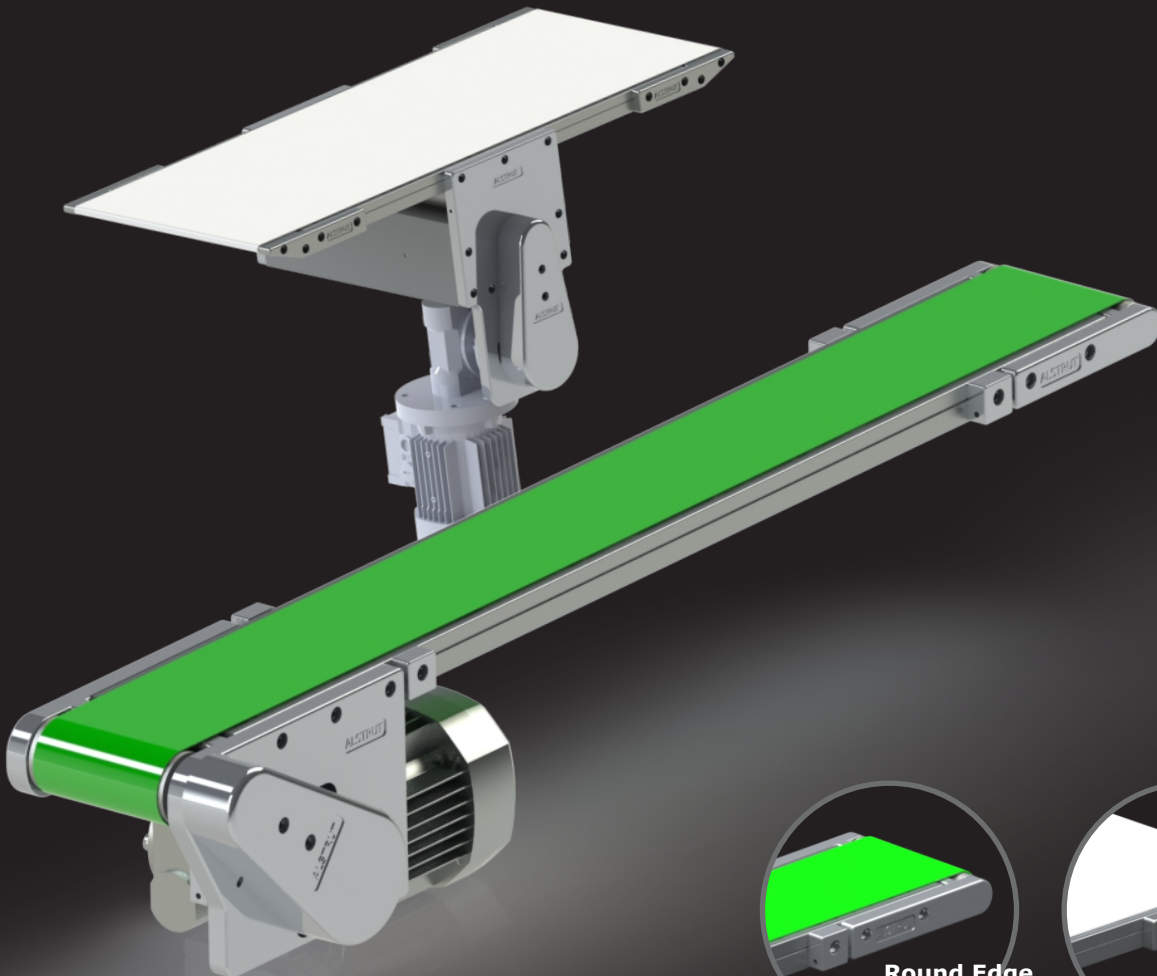


Standard Belt Conveyors

Knife Edge Conveyor
Round Edge Conveyor

Slim & Sleek
Standardized Design
Dust Free
Minimum Maintenance
Immediate Setup
Fast Delivery
Universal Motor Mounting
Bi-directional Motion



Round Edge



Knife Edge

Standard Belt Conveyors

Alstrut offers a range of standard conveyors to suit various industrial applications.

The Alstrut **knife edge conveyor** offers sharp 8mm knife like edges. These sharp edge enables smooth product transfer from one conveyor to another. The other advantage of this edge allows for easy transfer of small products.

The Alstrut **round edge conveyor** offers 30 mm round edge (50 mm round edge on the drive side). These conveyors are a cost-effective solution for most general conveying applications.

As in all Alstrut products, the underlining concepts based on which the conveyors have been designed are 'design for assembly', 'design for flexibility', 'design for aesthetics' and 'design for strength'.

The Alstrut standard conveyors are built using a unique aluminium block body. Besides adding to the strength, this construction enables quick manufacturing of conveyors from widths ranging from 100 mm to 600 mm and length ranging from 0.6 m to 6 m. The maximum load carrying capacity of the conveyor is about 50 kg with speeds varying from 3.5 m/min to 30.3 m/min.

The edges of the conveyor have no grooves which ensures a dust free operation of the conveyor. The unique design of the 'universal motor mounting block' allows for multiple sizes of motor / gear head to be used with the conveyor.

The Alstrut standard range of conveyors offers you cost effective conveyors of highest quality, superior aesthetics and deliveries in the shortest possible lead time.

The slim and aesthetically appealing Alstrut conveyors can be fitted as OEM customers, eliminating the need for machine builders to build their own conveyors. end users may now incorporate the Alstrut standard conveyors into their production lines ensuring minimum maintenance and maximum productivity.

Specifications Applications

End Use Applications

- Transfer & Transport
- Bridging
- Barcode Scanning
- Label Application
- Printing / Marking
- Product Spacing
- Vision Inspection

OEM applications

- Infeed Conveyor
- Outfeed Conveyor
- Printing Conveyor

Belt Width: 100, 200, 300, 400, 500, 600 (mm)

Conveyor Length: 600 mm to 6,000 mm

Belt Color: white, green (options : black, blue)

Belt Grade: food grade / non-food grade

Belt Thickness: 0.7mm - 1.6 mm

Speed: 3.5, 5.3, 7.1, 10.7, 14.1, 20.2, 30.3 m/min

Power Supply: 400 v | 3Ø | 50 Hz
230 v | 1Ø | 50 Hz

Options

- Variable Speed Controller
- Leg Sets
- Guides
- Sensor Mounting Block
- Groove Puncture Tool

ALSTRUT
POSSIBILITIES UNLIMITED

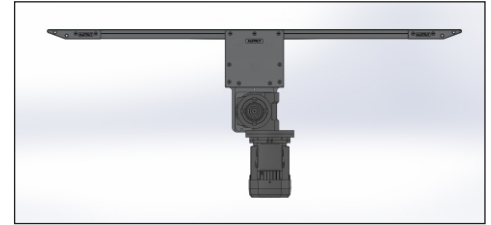
Alstrut India Private Limited
267 Kilpauk Garden Road
Chennai 600 010, India

+91-44-4294-9000

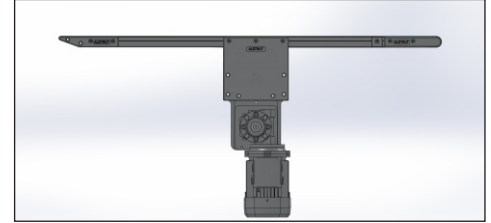
info@alstrut.com

Conveyor Configuration

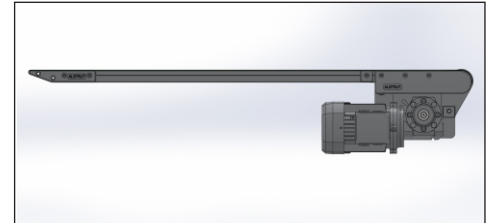
Knife edge | Knife edge | Middle drive



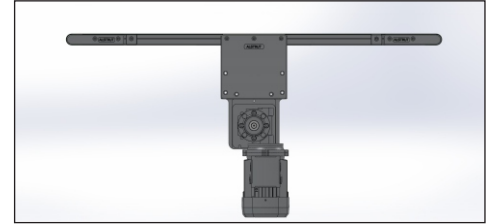
Knife edge | Round edge | Middle drive



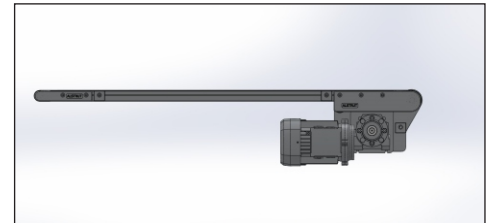
Knife edge | Round edge | End drive



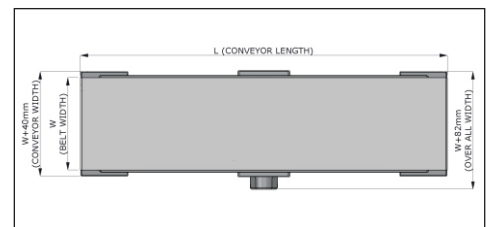
Round edge | Round edge | Middle drive



Round edge | Round edge | End drive



Dimensions



Machine Building Components
Assembly Line & Workplaces
Material Handling Solutions
Robotic Solutions
Special Purpose Machines

www.alstrut.com