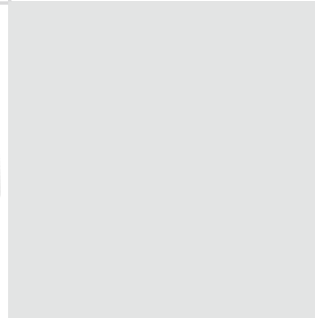
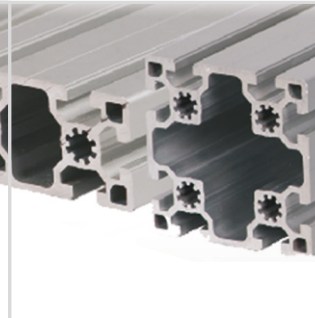
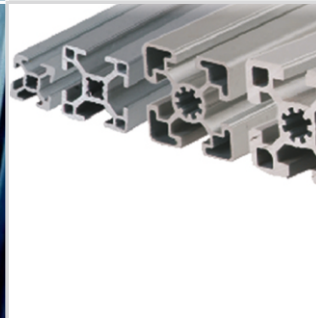
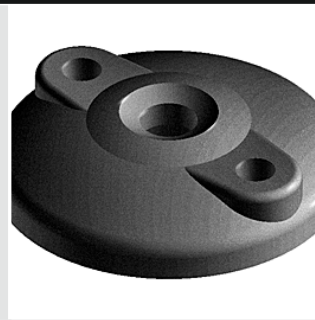
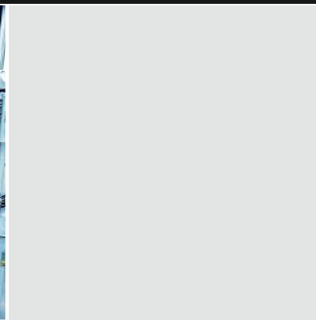
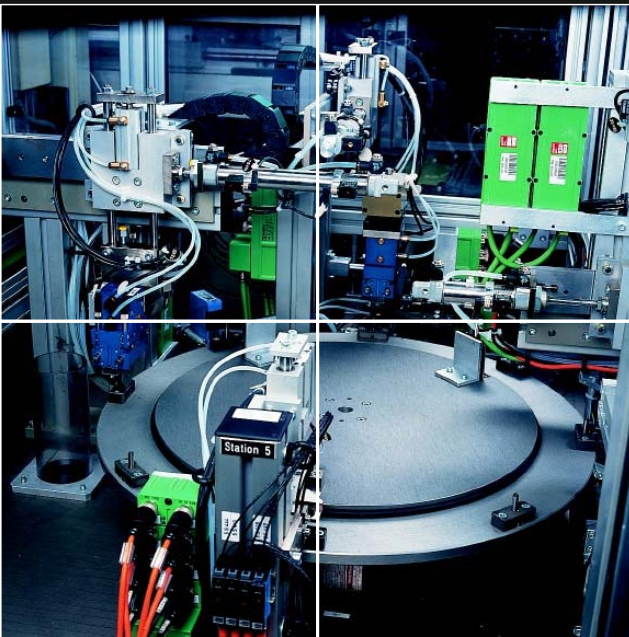
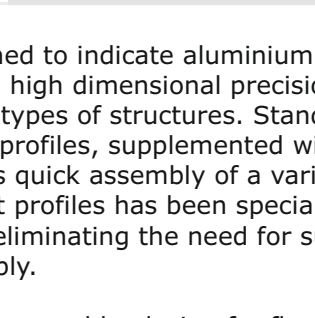
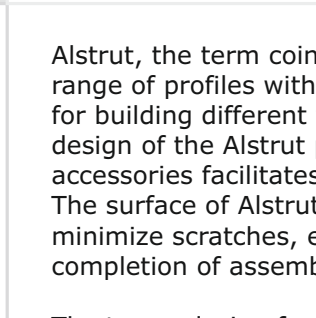
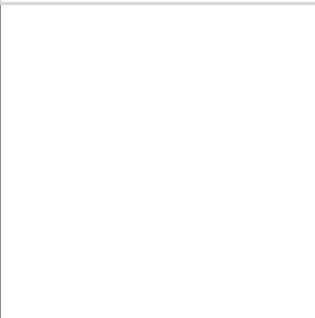


Machine Building Components
 Assembly Line & Workplaces
 Material Handling Solutions
 Robotic Solutions
 Special Purpose Machines

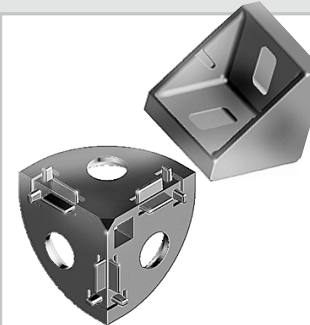


Aluminium Profile System
 Make Smarter Machines



- Applications**
- Machine Frame
 - Work Tables
 - Assembly Stations
 - Inspection Stations
 - Conveyors
 - Machine Enclosures
 - Assembly Lines

- Profiles**
- Joining Elements
 - Profile Accessories
 - Enclosure Accessories
 - Roller Tracks
 - Casters & Wheels



Alstrut, the term coined to indicate aluminium struts, offers a wide range of profiles with high dimensional precision that can be used for building different types of structures. Standardization in the design of the Alstrut profiles, supplemented with a wide range of accessories facilitates quick assembly of a variety of structures. The surface of Alstrut profiles has been specially anodized to minimize scratches, eliminating the need for surface finishing on completion of assembly.

The terms design for assembly, design for flexibility and design for aesthetics have been integrated into the development of Alstrut profiles and accessories.

Alstrut is perfect choice not only for machine building, but also for wide range of maintenance and utility requirements.

Alstrut helps you build machines and systems of international quality, enabling you to concentrate on your core technical strengths.